



UPS Scan To Order

Printer Setup Guide

Label Printer Enablement

Step 1: Download Zebra Browser Printer


Click the link “Download Browser Printer for Windows PC” via the link below.

[Scan To Order Label Printer Set Up](#)

Step 2: Install Zebra Browser Printer Adapter

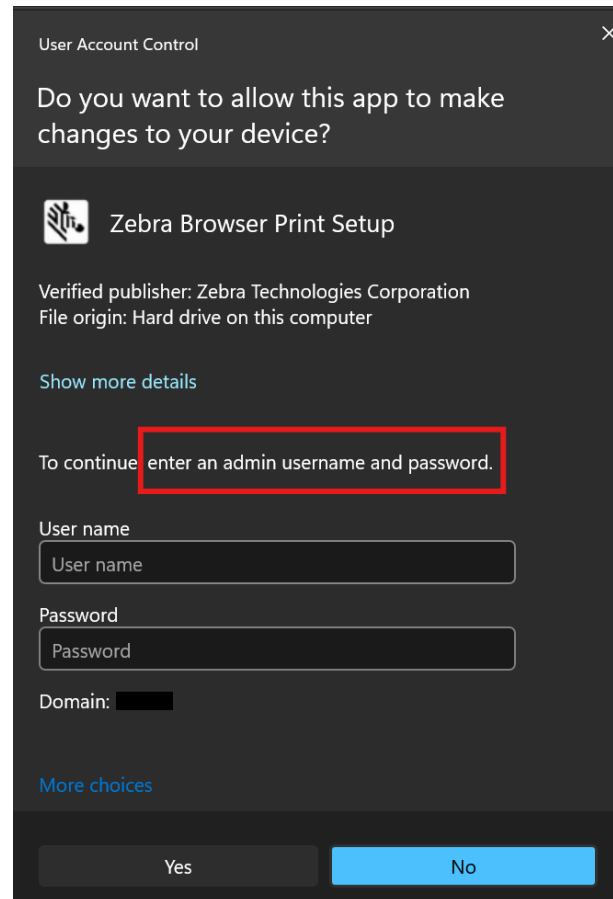
Double-click the executable file that was downloaded on your local machine.

- The download of the executable file "ZebraBrowserPrintSetup-1.3.X.exe" will begin.
- Double-click the installer after the download is complete and follow the installation instructions below.

 zebra-browser-print-windows-v132489 (1)	Application	34,913 KB
---	-------------	-----------

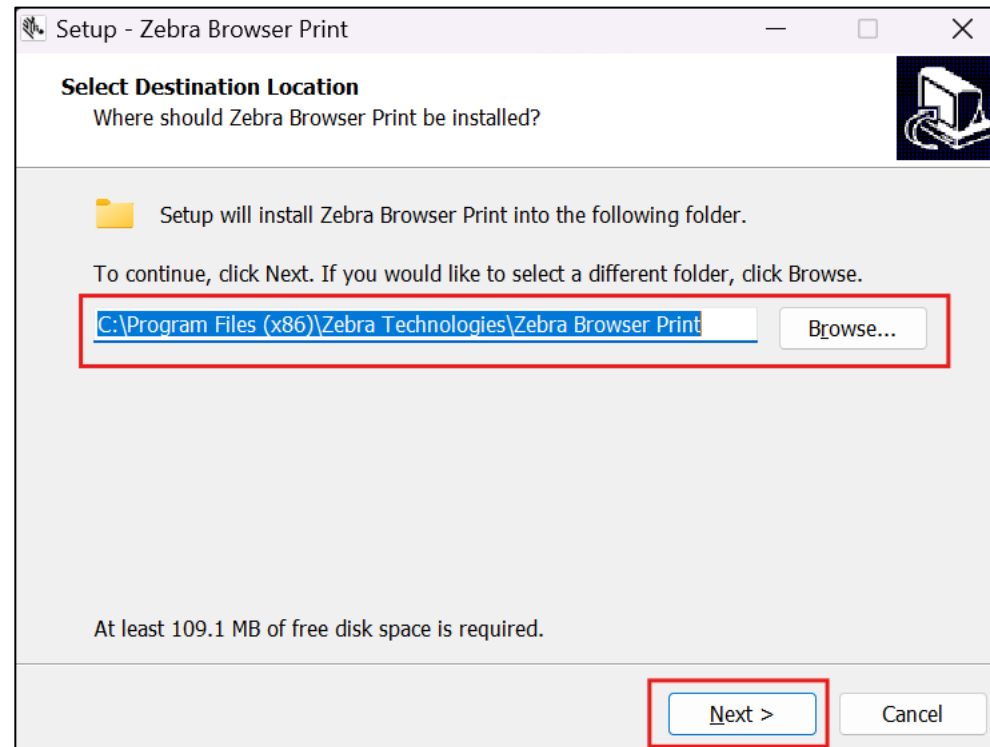
Label Printer Enablement

Step 2a: Contact your IT Department or Hardware Support Team if you are prompted to input your admin credentials.



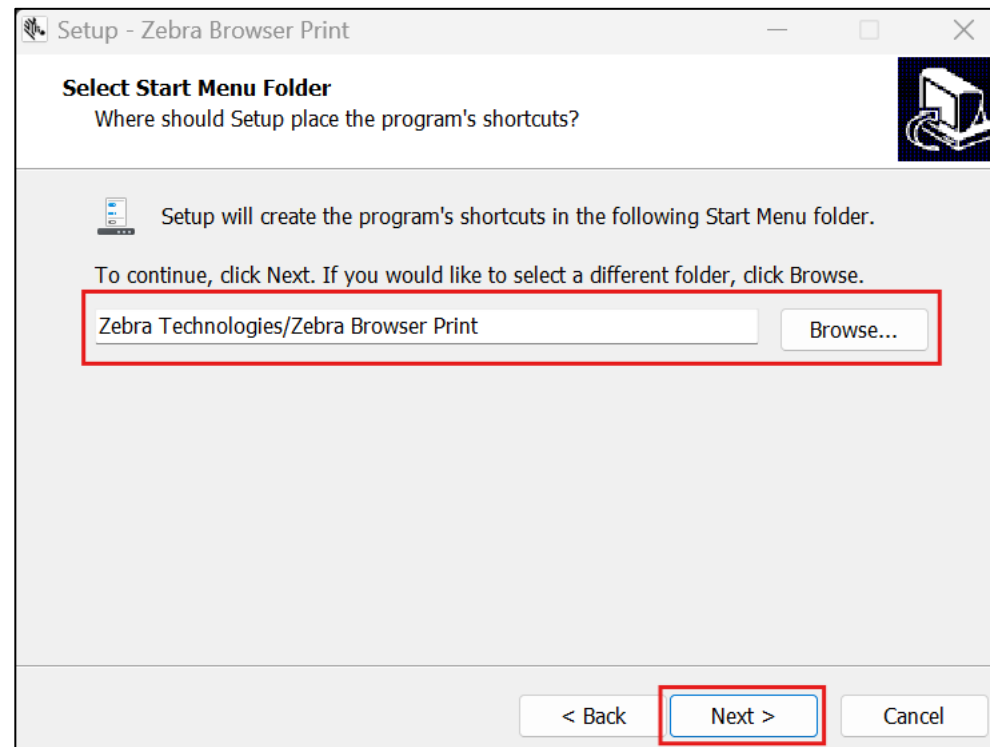
Label Printer Enablement

Step 3: Select the location to save the Zebra Browser Print files and click 'Next'.



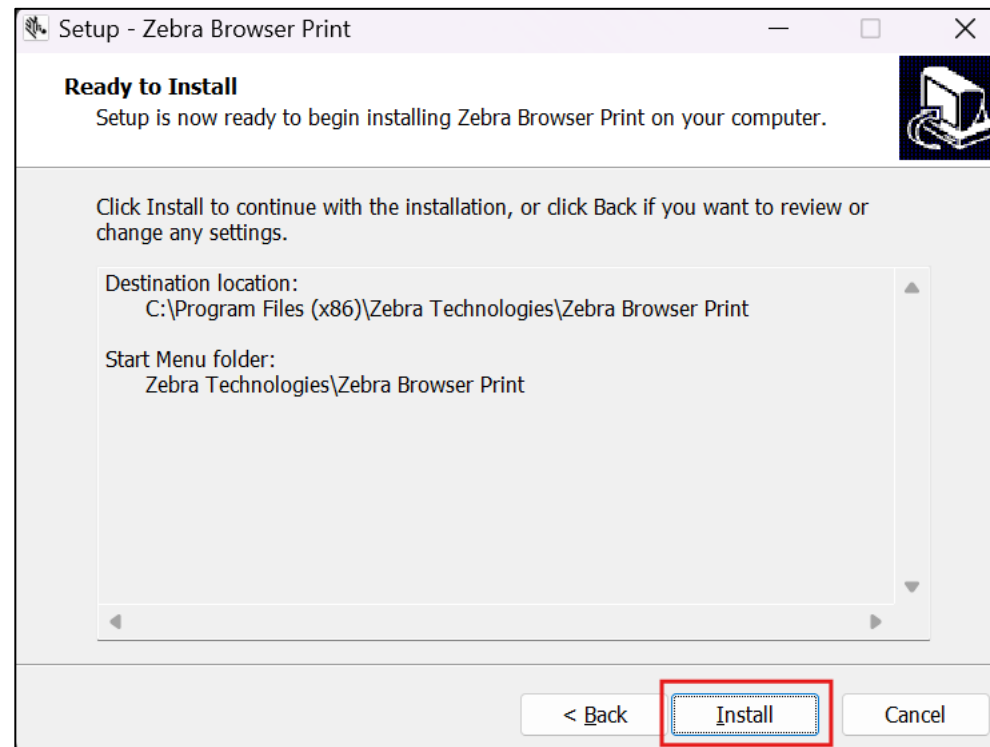
Label Printer Enablement

Step 4: Select where you want to run the software and click 'Next'.



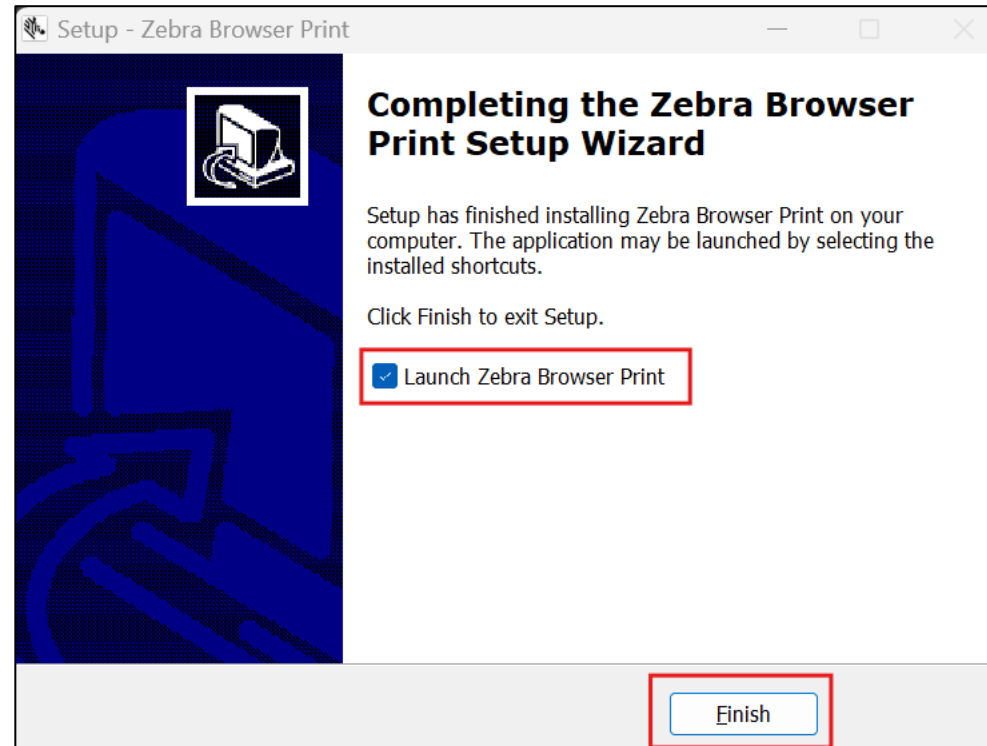
Label Printer Enablement

Step 5: Click 'Install'.



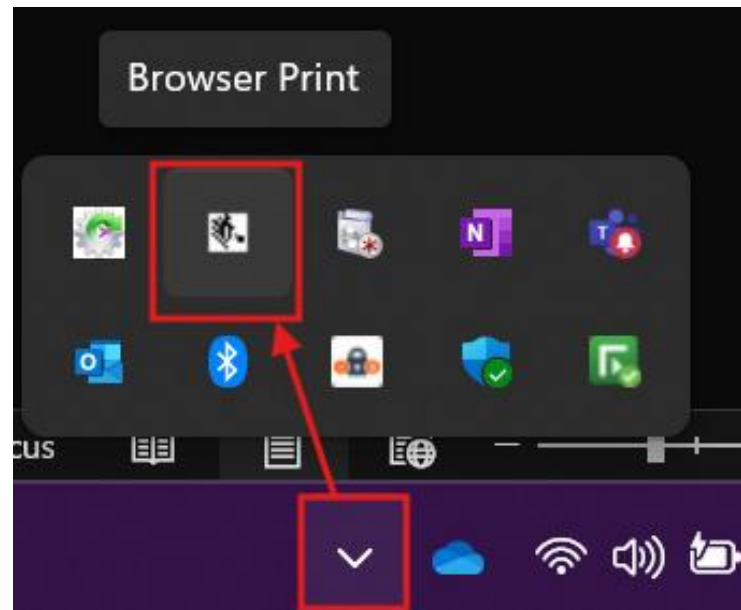
Label Printer Enablement

Step 6: After successful installation 'Launch Zebra Browser Print' is selected by default. Click 'Finish'.



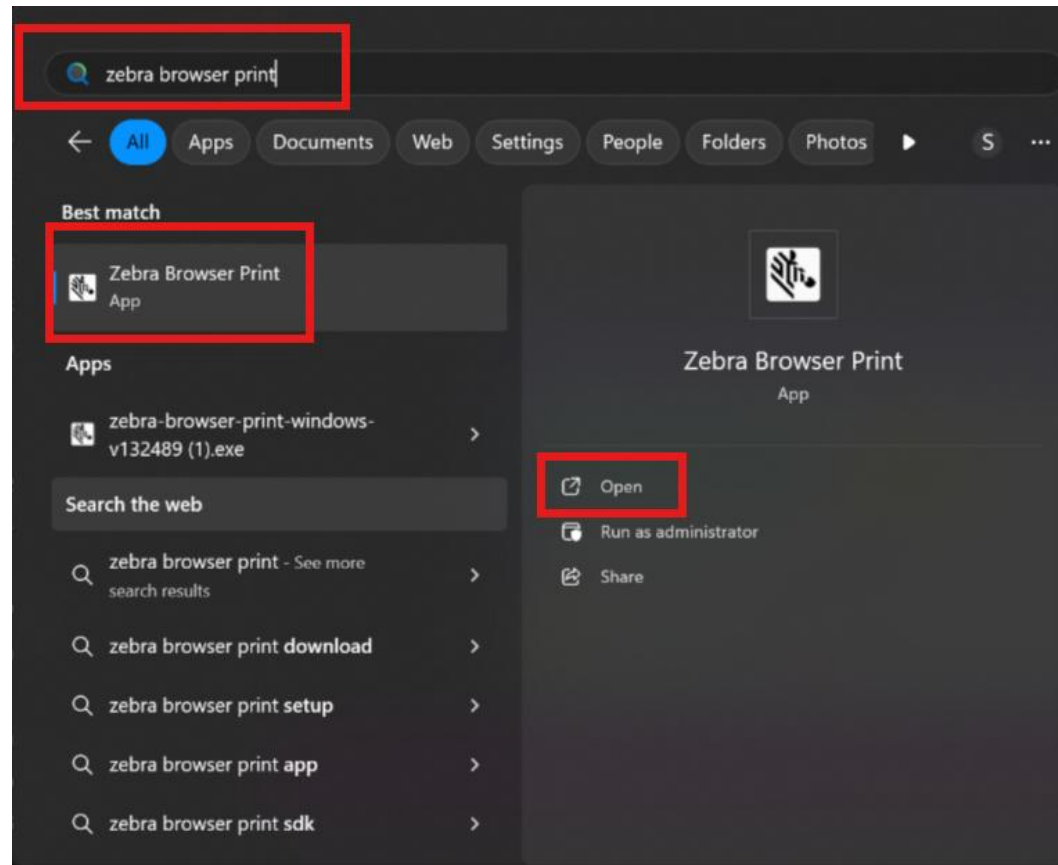
Label Printer Enablement

Step 7: After successful installation, click the 'show hidden icons' arrow located near the system tray icons on the taskbar in the bottom right corner. It will display a flyout menu with the hidden icons. Find the 'Zebra' icon as shown below.



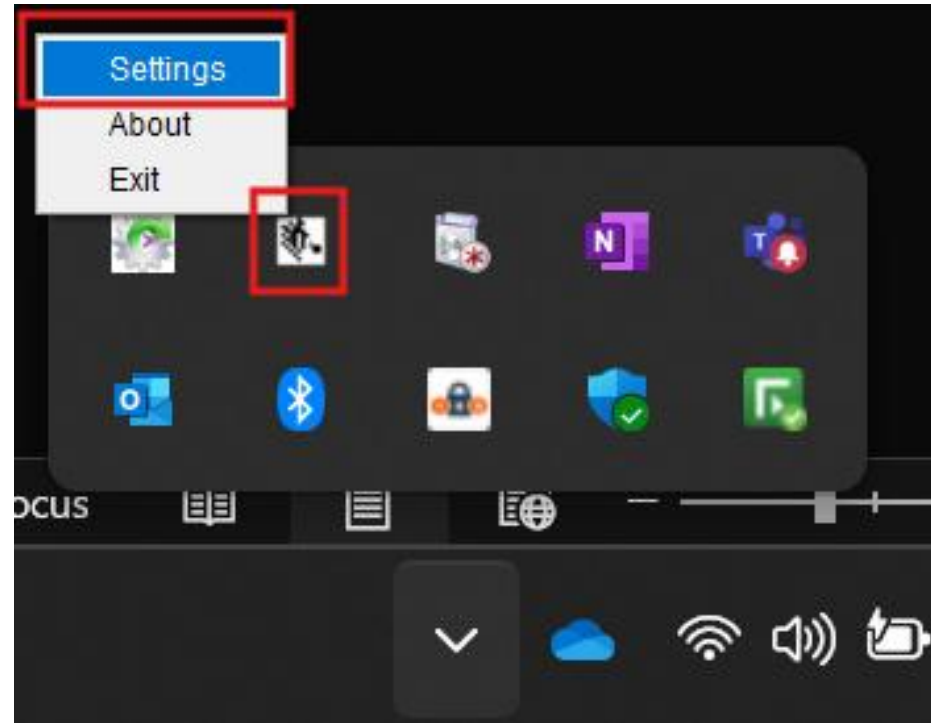
Label Printer Enablement

Step 7a: If the Zebra icon is not visible in the system tray icons on the taskbar, then search for 'Zebra Browser Print' in Windows and click on 'Open'.



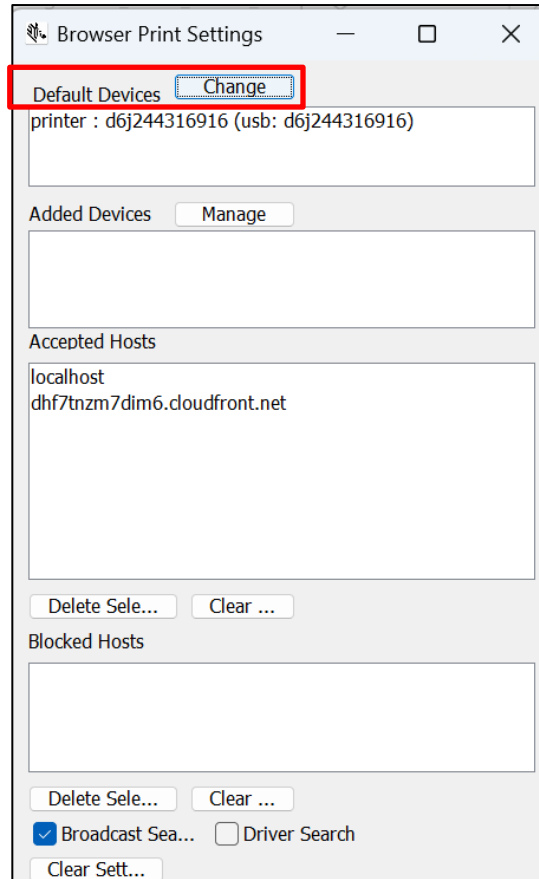
Label Printer Enablement

Step 8: Right Click on the 'Zebra' icon and select 'Settings'.



Label Printer Enablement

Step 9: The installed Zebra printer will be listed under the 'Default Devices' section. Confirm the default label printer is correct. To update, select 'Change' and choose from the additional printer options.



Printer set up is complete.